

Multiscan VS

Static or 'on the fly' Vector Marking

The ROFIN MULTISCAN VS has been specifically developed to enable simple alphanumeric and/or complex marks containing graphics to be applied to a wide variety of materials. The system can mark stationary items or moving products that need to be coded 'on the fly'. The flexible software allows intelligent data to be placed anywhere within the specified scan area. It also offers an optional facility to generate and download complex graphics and can also produce two-dimensional or traditional bar codes.



- Highest quality vector generation... precise reproduction of graphics
- Large scan area...large format codes or enhanced 'on the fly' marking
- Perfect line tracking, low maintenance ...fit and forget
- Advanced curve profiling...accurate scaling of complex drawings and fonts
- Static or 'on the fly' marking capability...flexibility for your current or future marking needs



The Multiscan VS

SPECIFICATIONS

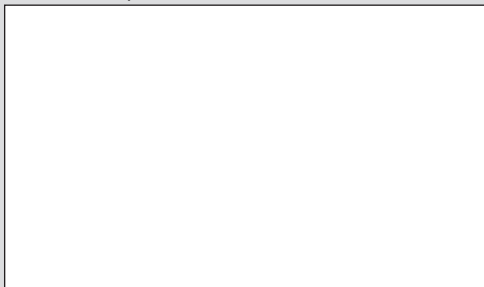
Laser	Single sealed CO₂, RF excited SLAB
Average coding power	120 watts (max)
Maximum characters/sec.	Up to 1000 (2mm high characters)
Beam delivery	Articulated and special options available
Marking Head	Dual axis scanner
Scan area	70mm x 70mm — 250mm x 250mm
Cooling	Integral (air to water)*
Sealing	IP56
Voltage	200-240v 50/60 Hz Single or Bi-phase
Software	Windows operating system. Programmable date/time with offset, custom date, sequential, password protection, logos etc.
Control	Integral QWERTY keypad and 1/4 VGA display, remote keypad optional

*Optional Closed cycle/mains water for high duty cycle applications.

ROFIN is one of the world's leading designers and manufacturers of industrial lasers. The company has more than 25,000 laser units installed world-wide and serves more than 3,000 customers in a wide variety of applications and industry sectors.



Distributed by:



rofin

Rofin-Sinar UK Ltd.
York Way, Willerby
Kingston upon Hull
HU10 6HD
United Kingdom
T: +44 1482 650088
F: +44 1482 650022
E: sales@rofin-uk.com
W: www.rofin.com

Marked examples



Glass



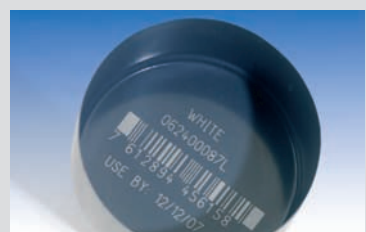
Carton



PVC



Plastic



Painted Metal



Crystal

© Rofin-Sinar UK Ltd., April 2007.

Please note that while every effort has been made to ensure that the data given in this document is accurate, due to a policy of continuous improvement, the information, figures, illustrations, tables, specification and schematics contained herein are subject to change without notice.

ENG 903-0059-00 Rev C.