



## STARFIBER 100/200/400/600

### THE FIBER LASER FOR FINE WELDING, CUTTING AND DRILLING

ROFIN's StarFiber, a robust and compact fiber laser source, satisfies all criteria for optimized industrial laser material processing.

For laser joining, the StarFiber allows very small seam geometries at very high welding speeds. The welded joints show maximum strength with minimal heat input to the workpieces.

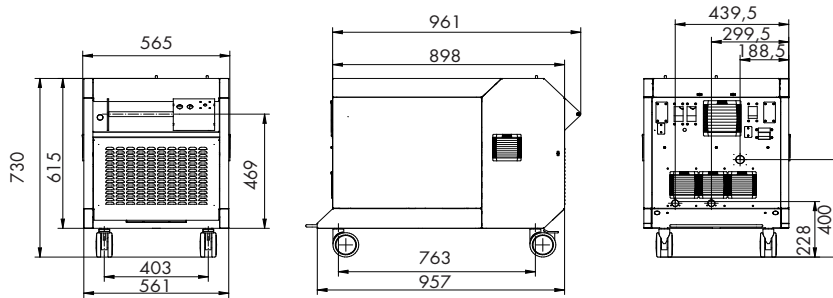
Laser fine cutting and drilling with StarFiber results in clean cuts with low heat affected zones and high edge qualities.

#### Features

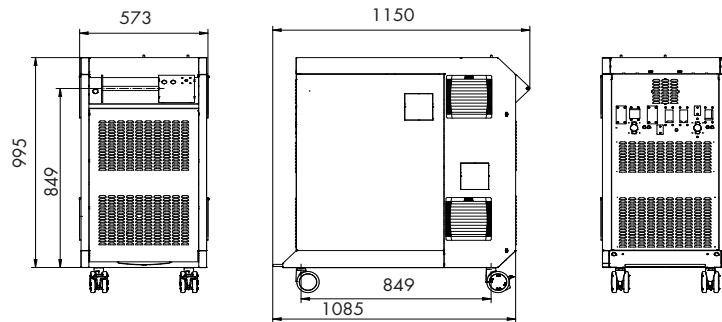
- 100 – 600 W
- Analogue power control
- High efficiency
- Smallest spot size
- Safety features (industrial standard)
- Convenient operator control
- Innovative ROFIN control unit (RCU)
- ROFIN SmartWeld™ technology for optimized welding properties
- Wide range of ROFIN application packages for fine cutting, welding and drilling



StarFiber  
100/200



StarFiber  
400/600



## Specifications

| StarFiber   |                | 100                      | 200  | 400                  | 600                 |
|---|----------------|--------------------------|------|----------------------|---------------------|
| Wavelength  | nm             | 1070                     |      |                      |                     |
| Output power max.   | W              | 100                      | 200  | 400                  | 600                 |
| Pulse frequency   | kHz            | single shot up to 170    |      | single shot up to 50 | single shot up to 5 |
| Pulse width (FWHM)  | µs             | 0,5 - cw                 |      | 1 - cw               |                     |
| Beam diameter (1/e <sup>2</sup> )   | mm             | 5+/-0,5                  |      | diverging            |                     |
| Beam divergence (full angle)  | mrad           | collimated               |      | <150                 | <140                |
| Beam quality  | M <sup>2</sup> | < 1.1                    |      |                      |                     |
| Free fiber length   | m              | 5                        |      |                      |                     |
| Fiber connection  |                | QCS                      |      | RQB                  | QBH                 |
| <b>Environmental and Electrical Operating Conditions</b>                        |                |                          |      |                      |                     |
| Supply voltage  | VAC/A          | 208 to 240 V 1P/N/PE, AC |      | 400 V 3P/N/PE, AC    |                     |
| Line Frequency  | Hz             | 50/60                    |      |                      |                     |
| Power consumption max.  | kW             | 1,5                      | 2,25 | 2,7                  | 3,5                 |
| Cooling   |                | air                      |      |                      |                     |
| Weight power supply   | kg             | 120                      |      | 130                  | 250                 |
| Dimensions power supply   | mm (L x W x H) | 1065 x 565 x 730         |      | 1150 x 573 x 1110    |                     |
| <b>Standardized Interfaces</b>  |                |                          |      |                      |                     |
| Parameter set via 24V parallel I/O, Communication via Ethernet, analog (0-10 V) |                |                          |      |                      |                     |
| Safety shutter according to DIN EN 13849-1                                      |                |                          |      |                      |                     |
| <b>Options</b>  |                |                          |      |                      |                     |
| Scannersystem, Pilotlaser, Camera view, Remote maintenance;                     |                |                          |      |                      |                     |

ROFIN-BAASEL Lasertech  
GmbH & Co.KG  
Zeppelinstraße 10-12  
82205 Gilching  
Phone: +49 8105 3965-0  
Fax: +49 8105 3965-4159  
E-mail: sales-micro@rofin.de

ROFIN-SINAR Laser GmbH  
Berzeliusstr. 87 22113 Hamburg  
Phone: +49(0)40-7 33 63-0  
Fax: +49(0)40-7 33 63 4100  
E-mail: info-macro@rofin.de

ROFIN-SINAR Laser GmbH  
Dieselstr. 15 85232 Bergkirchen  
Tel.: +49(0)81 31-704-0  
Fax: +49(0)81 31-704 4100  
E-mail: info-marking@rofin.de

[WWW.ROFIN.COM](http://WWW.ROFIN.COM)

Belux: Phone: +31 78 69310-37  
E-mail: info@rofin-baasel.nl

CA: Phone: +1 905 607-0400  
E-mail: info-canada@rofin-inc.com

CH: Phone: +41 32 322-1010  
E-mail: info@rofin-lasag.ch

CN: Phone: +86 21 68552216  
E-mail: info@rofin-baasel.com.cn

ES/PT: Phone: +34 93 4770-644  
E-mail: info@rofin-es.com

F: Phone: +33 1 6911-3636  
E-mail: info@rofin.fr

IN: Phone: +91 22 276125-1  
E-mail: info@rofin.in

IT: Phone: +39 039 2729-1  
E-mail: info@rofin.it

JP: Phone: +81 46 229-8655  
E-mail: info@rofin-baasel.co.jp

KR: Phone: +82 2 837-1750  
E-mail: info@rofin.co.kr

SG: Phone: +65 6482-1091  
E-mail: reception@rofin-baasel.com.sg

TW: Phone: +886 2 2790-1300  
E-mail: info@rofin-baasel.com.tw

UK: Phone: +44 1327 701-100  
E-mail: sales@rofin-baasel.co.uk

US: Phone: +1 734 455-5400  
E-mail: info@rofin-inc.com

Find further representatives and partners on: [www.rofin.com/worldwide](http://www.rofin.com/worldwide)

